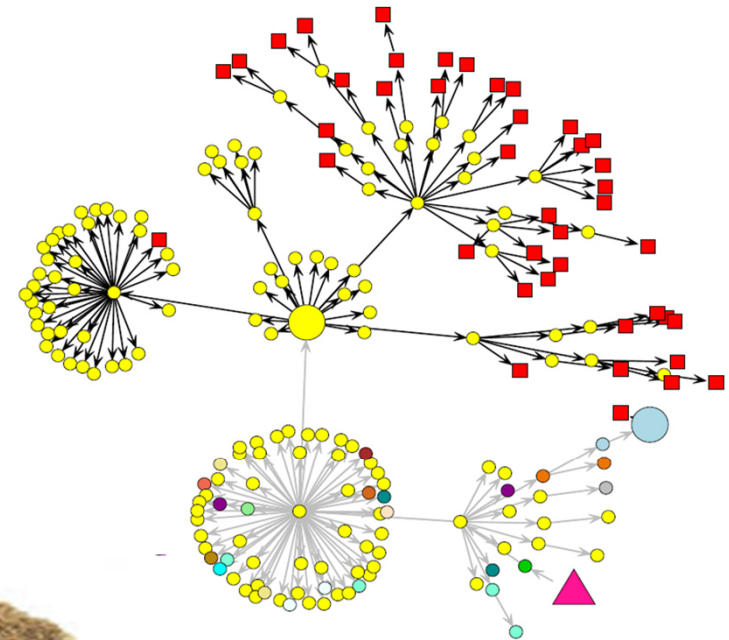


KNIME Introduction

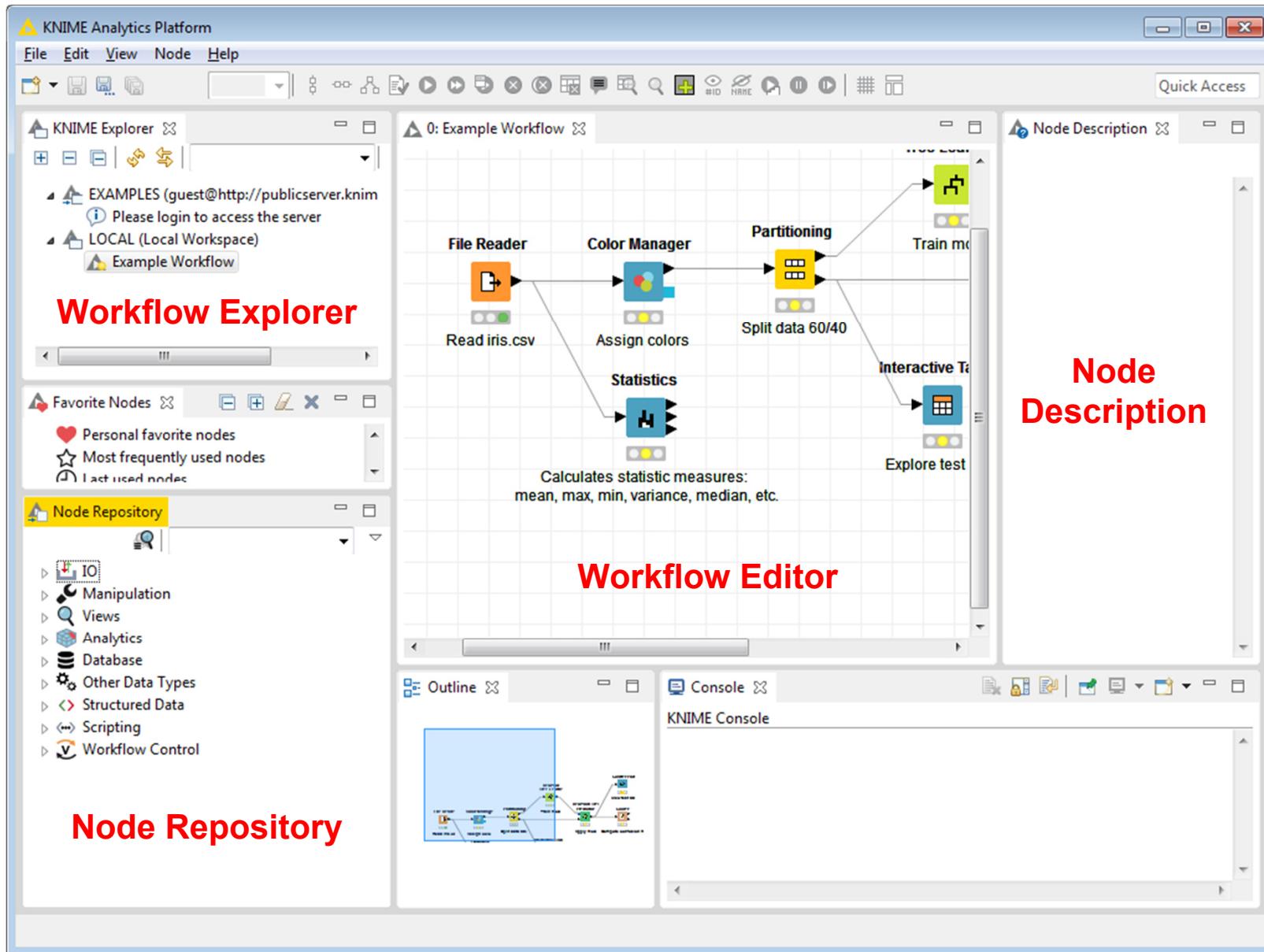


**Armin Weiser, Marion Gottschald, Alexander Falenski,
Marco Rügen, Christian Thöns, Matthias Filter,
Annemarie Käsbohrer, Bernd Appel, Karsten Nöckler**

What is KNIME?

- KNIME = Konstanz Information Miner
- Software for managing and analyzing data
- Desktop version available free of charge (Open Source)
- Core Functionality: Data Mining, Manipulation and Visualization
- Modular: Software can be extended via plug-ins

How does KNIME look like?



KNIME Nodes

Node States

Red = not configured

XLS Reader



Yellow = configured

XLS Reader



Green = executed

XLS Reader



Node Types

Import to KNIME

XLS Reader



Manipulate in KNIME

Row Filter

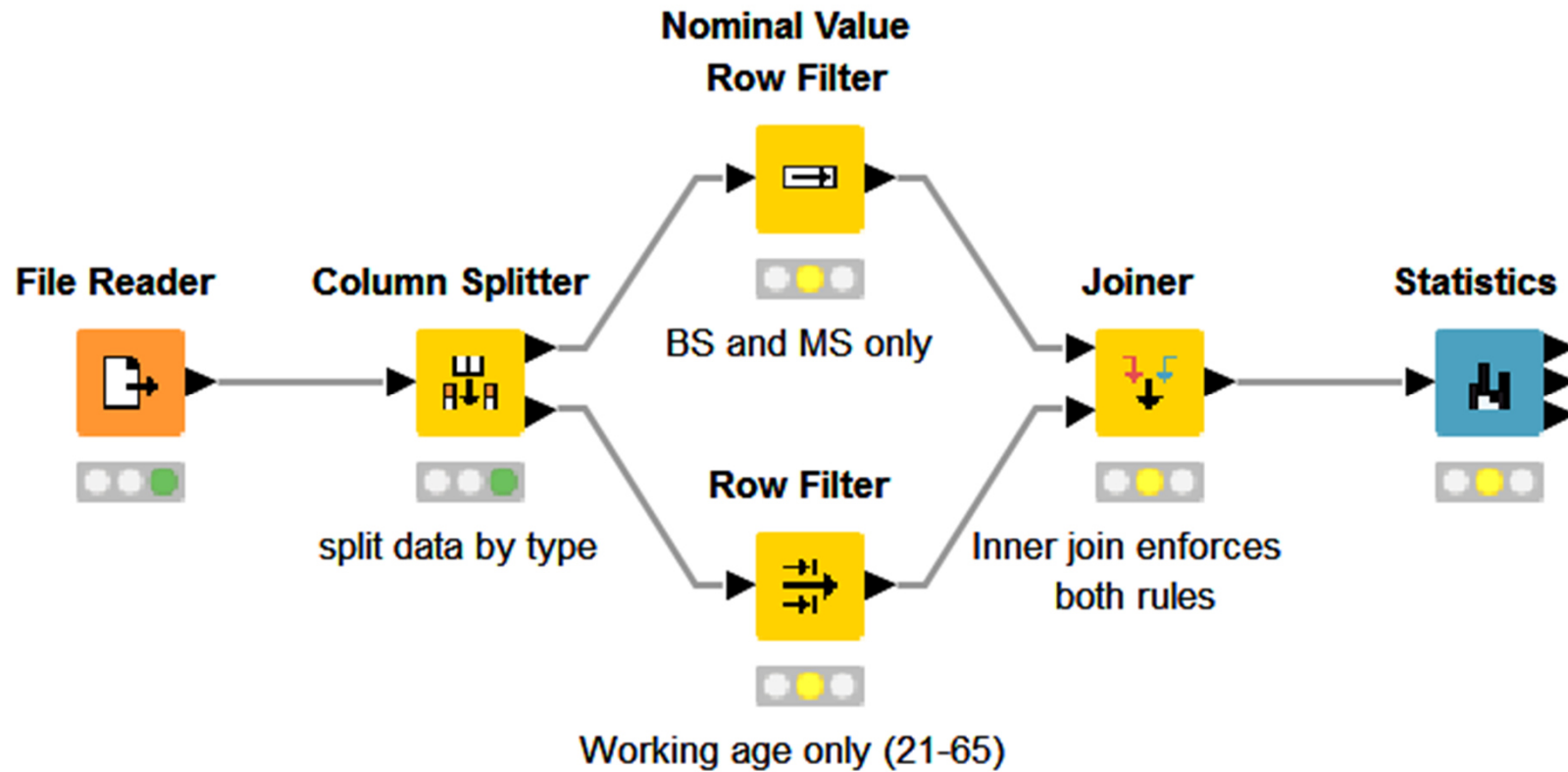


Export from KNIME

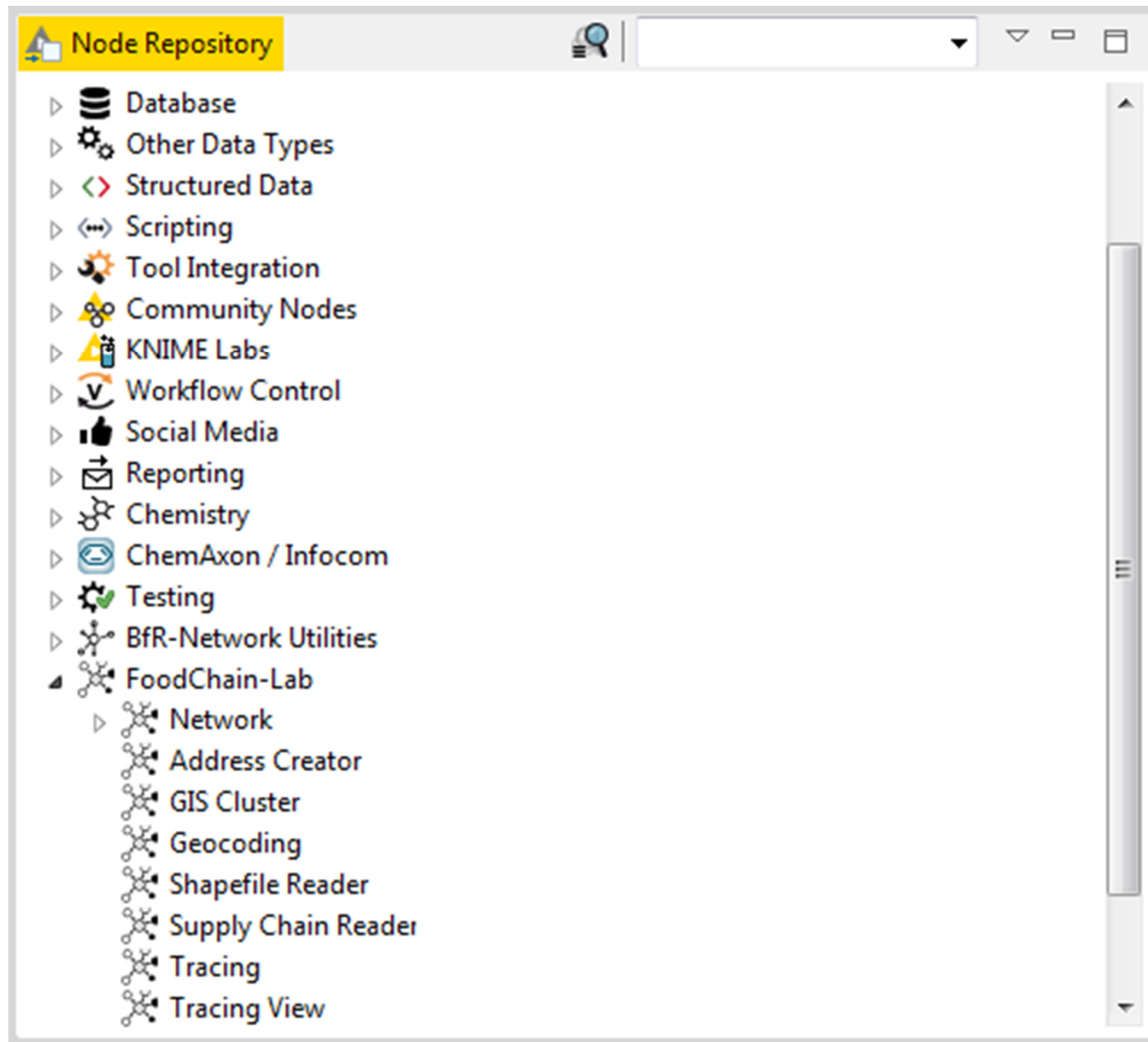
XLS Writer



KNIME Workflows



KNIME Extensions





Thank you for your attention

Armin Weiser

<http://foodrisklabs.bfr.bund.de>

Federal Institute for Risk Assessment

Max-Dohrn-Str. 8-10 • 10589 Berlin, GERMANY

Tel. +49 30 - 184 12 - 0 • Fax +49 30 - 184 12 - 47 41

foodrisklabs@bfr.bund.de • www.bfr.bund.de