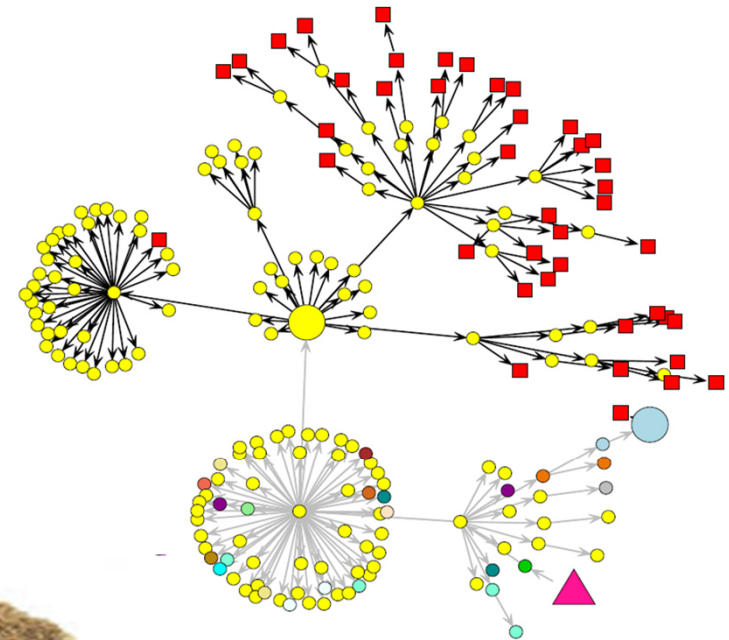


## KNIME Introduction

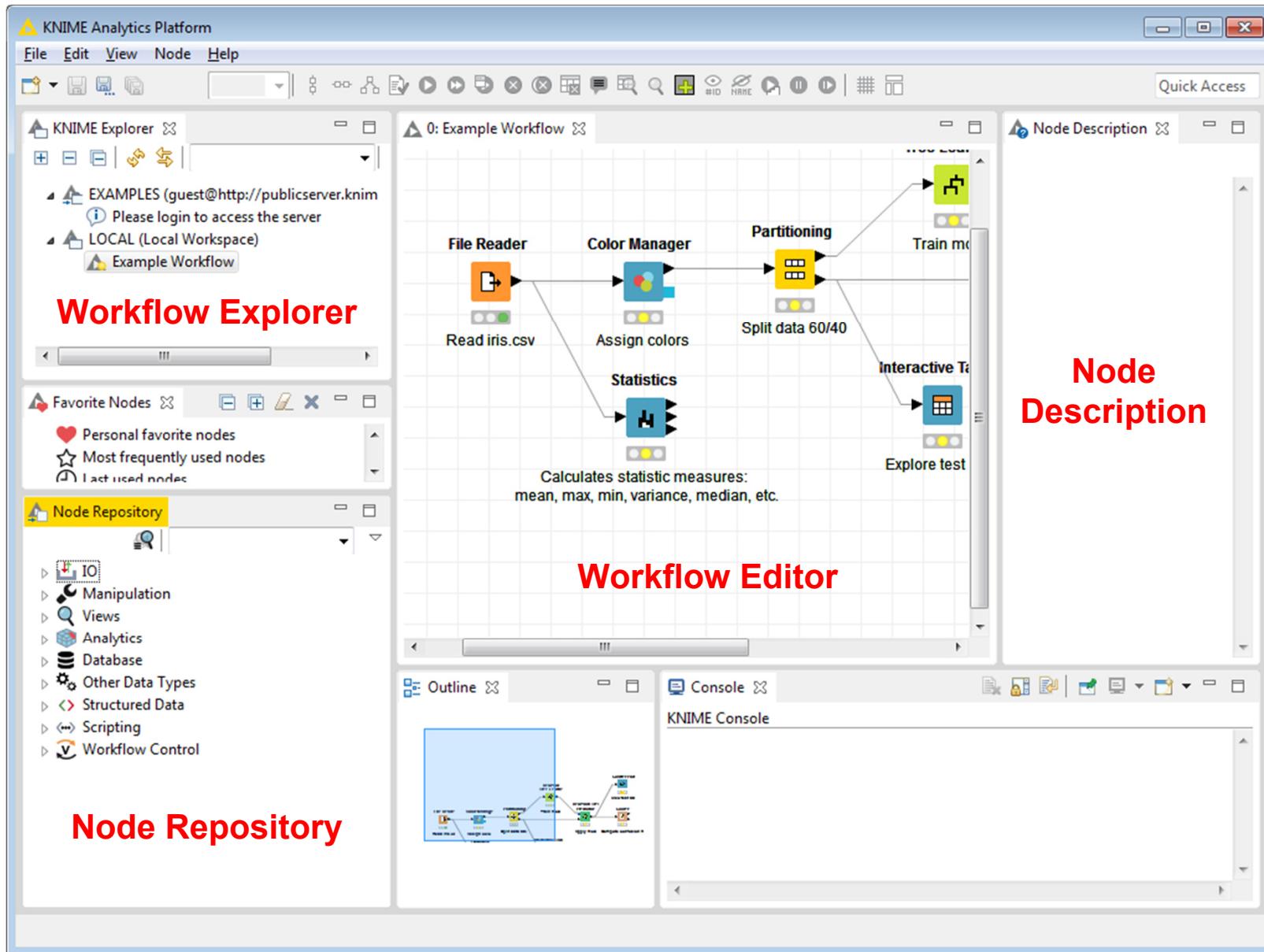


**Armin Weiser, Marion Gottschald, Alexander Falenski,  
Marco Rügen, Christian Thöns, Matthias Filter,  
Annemarie Käsbohrer, Bernd Appel, Karsten Nöckler**

# What is KNIME?

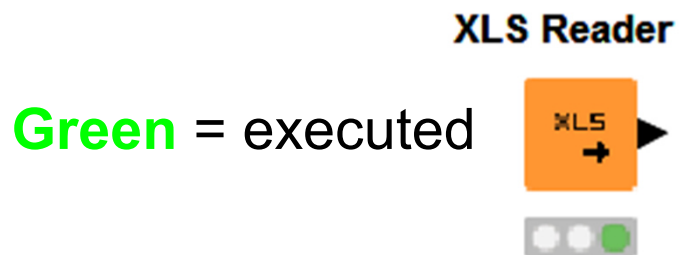
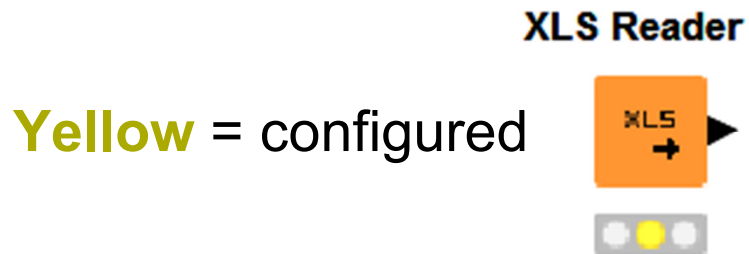
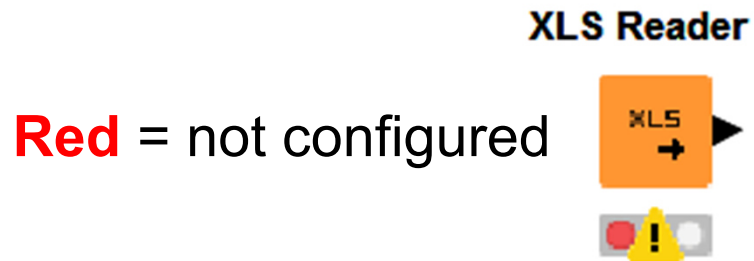
- KNIME = Konstanz Information Miner
- Software for managing and analyzing data
- Desktop version available free of charge (Open Source)
- Core Functionality: Data Mining, Manipulation and Visualization
- Modular: Software can be extended via plug-ins

# How does KNIME look like?



# KNIME Nodes

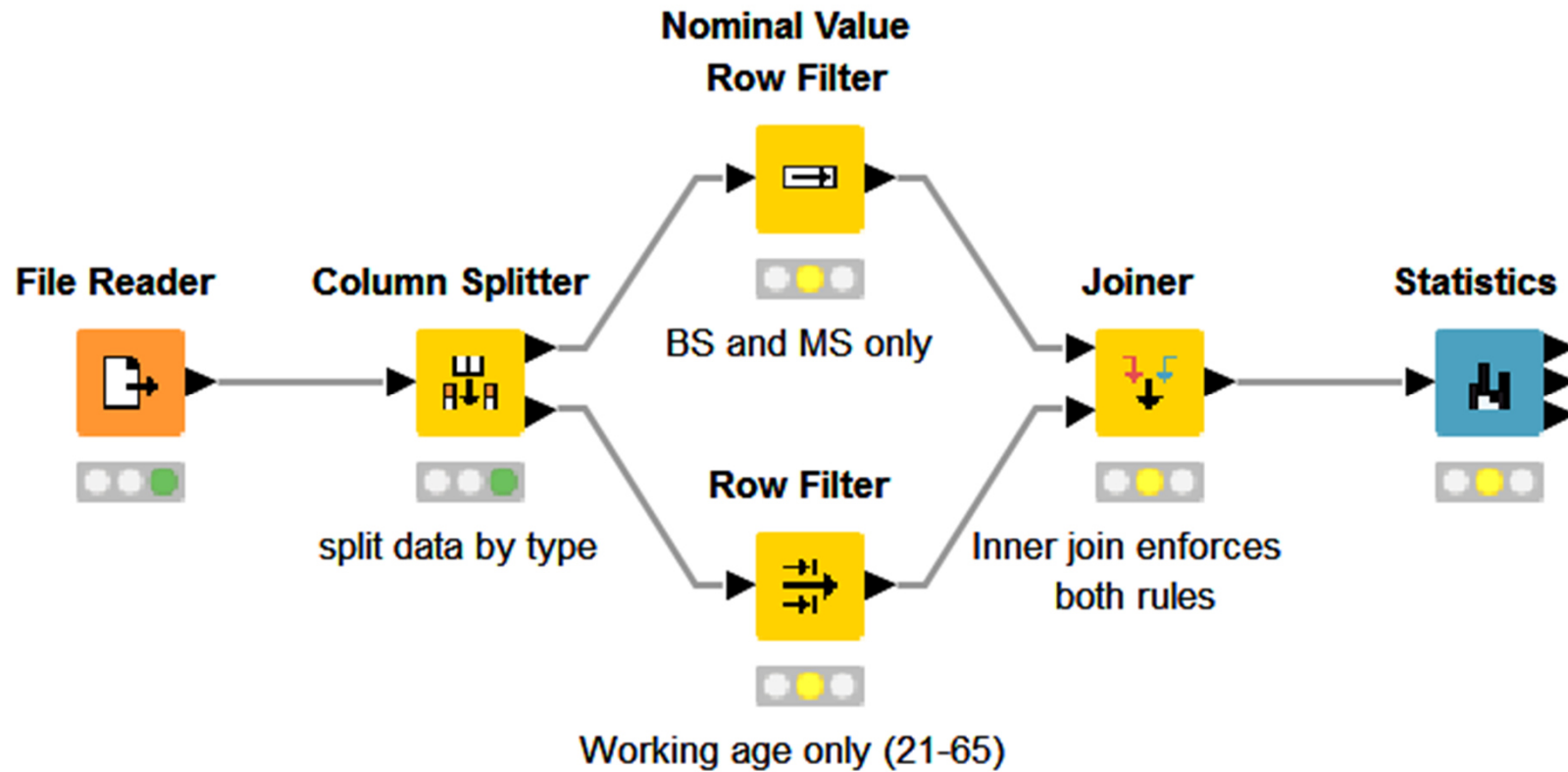
## Node States



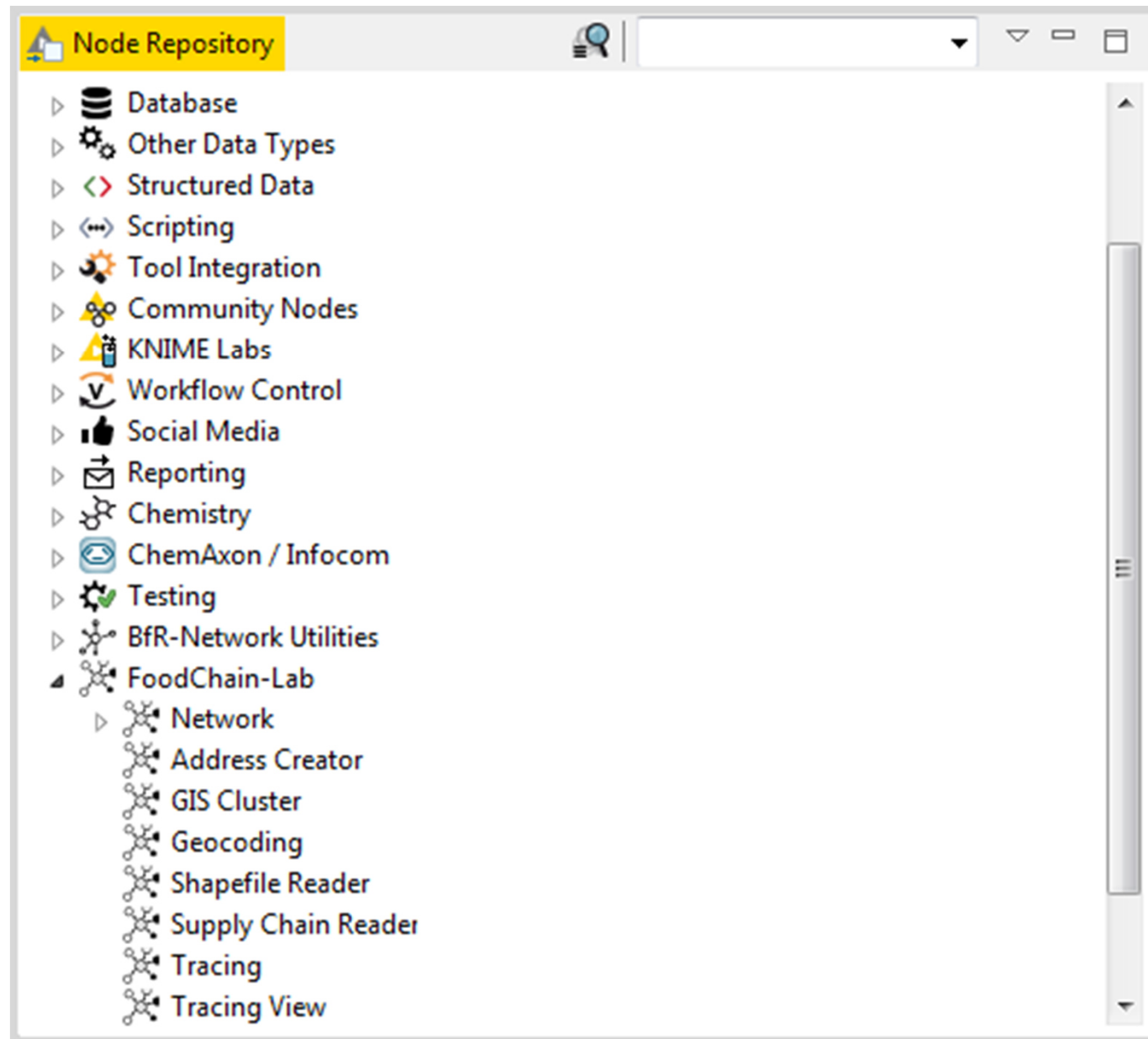
## Node Types



# KNIME Workflows



# KNIME Extensions





**Thank you for your attention**

**Armin Weiser**

<https://foodrisklabs.bfr.bund.de>

Federal Institute for Risk Assessment

Max-Dohrn-Str. 8-10 • 10589 Berlin, GERMANY

Tel. +49 30 - 184 12 - 0 • Fax +49 30 - 184 12 - 47 41

[foodrisklabs@bfr.bund.de](mailto:foodrisklabs@bfr.bund.de) • [www.bfr.bund.de](http://www.bfr.bund.de)