



FoodChain-Lab Web App

Alexander Falenski, Marion Gottschald, Marco Rügen,
Birgit Lewicki, Christian Thöns, Matthias Filter, Annemarie
Käsbohrer, Bernd Appel, Karsten Nöckler, Armin A. Weiser

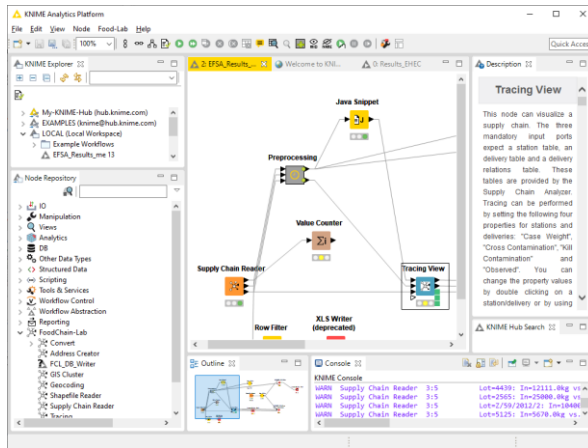


Features and Scope of FoodChain-Lab

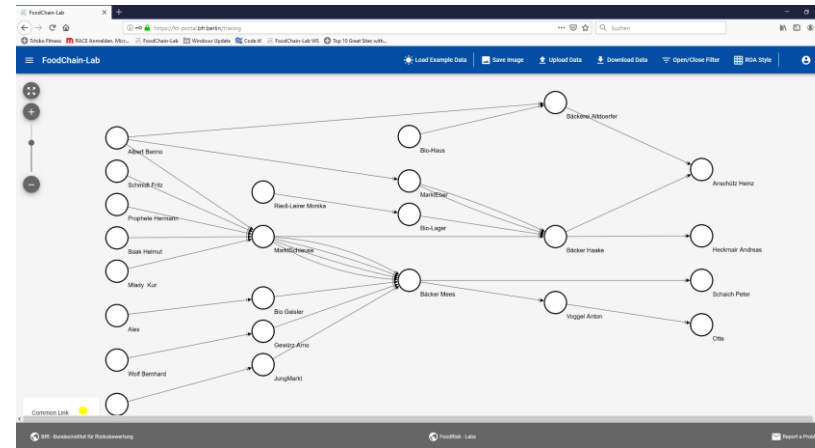
Desktop
and
Web-App

Overview: FoodChain-Lab Desktop and Web App

Desktop



Web App



- In KNIME (~ 1 GB installation)
- Data is stored locally
- Using KNIME needs to be learned

- In a web browser (no installation)
- Data stays local, browser is only for visualisation
- Intuitive handling

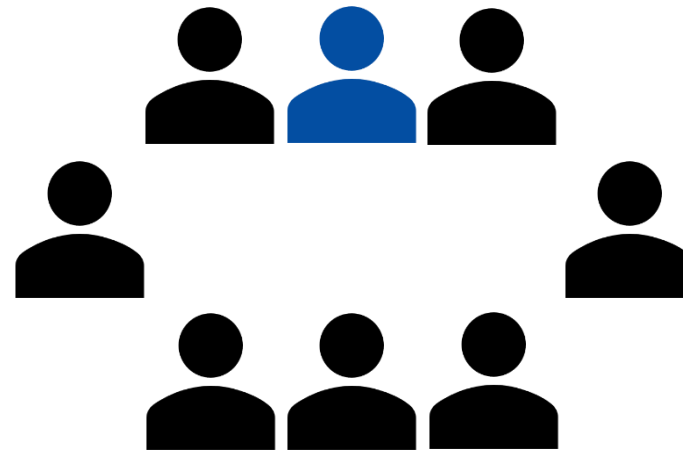
Features

- Database with plausibility checks
- Geocoding
- KNIME Data analytics functionalities
- Graph view and GIS view
- Tracing
- Hypothesis generation
- -

Features

- -
- -
- -
- Graph view and GIS view
- Tracing
- Hypothesis generation
- ROA style for reports

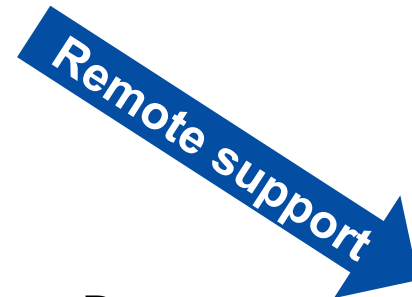
Overview: FoodChain-Lab Desktop and Web App



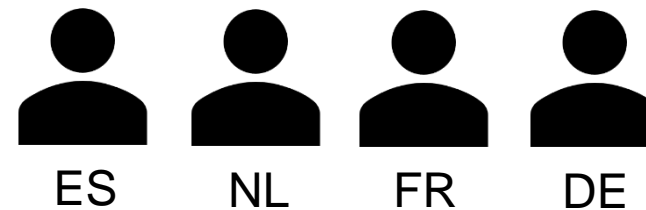
The outbreak investigation experts discuss the FoodChain-Lab results together with the data analyst and test *in silico* new hypotheses.



Data analyst prepares data in FCL desktop



Dataset is sent as JSON file to experts



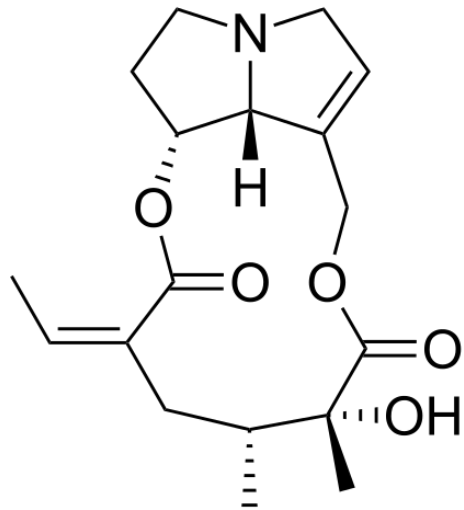
The outbreak investigation experts in different parts of the world upload the JSON file in the FCL Web App and test *in silico* new hypothesis



Background information on the Web-App Scenario

Contamination Scenario

Pyrrolizidine alkaloids (PAs) in baby tea (fennel tea)



Jacobaea vulgaris

<https://de.wikipedia.org/wiki/Jakobs-Greiskraut>



Fennel flower

<https://www.pinterest.com/pin/529947081126917608/>

- Toxic for the liver
- Carcinogenic