

Analytical features of FoodChain-Lab and successful applications in outbreak analyses (live demo)

11.02.2025

Alexander Falenski

EHEC O104:H4 outbreak in sprouts 2011

EHEC 2011 - which is the contaminated ingredient?

Products in focus

- Cucumbers
- Tomatoes
- Sprouts



Hepatitis A outbreak in berries 2013/14

Geocoding Services

Service	Data request	Server is located in	Addresses from	Map basis	Precision	Costs
Photon	Online	DE	World	OSM	House number	Free
MapQuest	Online	USA	World	HERE, OSM	House number	Free
Bing Maps	Online	USA	World	Bing Maps	House number	Free
BKG	Online	DE	World	BKG	House number	€

BKG – Bundesamt für Kartographie und Geodäsie (official maps of Germany); OSM – Open Street Maps

- Geocoding services often do not find all addresses. Then you can use a cascade of several geocoding services
- If you do not want to search for addresses online (due to GDPR reasons) it is possible to search for streets without house numbers. Or you search only for ZIP codes.
- If the whole geocoding service is downloadable you could also set up a server in your own institution so that your searches stay completely offline.

Geocoding Services

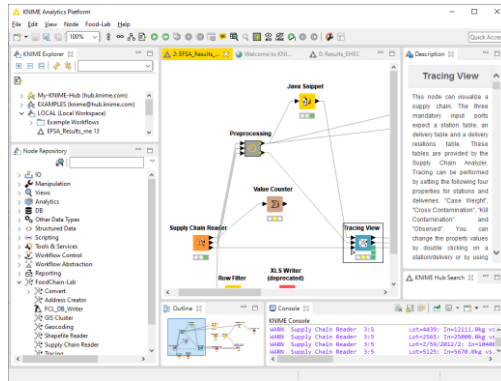
Service	Data request	Server is located in	Addresses from	Map basis	Precision	Costs
Photon	Online	DE	World	OSM	House number	Free
MapQuest	Online	USA	World	HERE, OSM	House number	Free
Bing Maps	Online	USA	World	Bing Maps	House number	Free
BKG	Online	DE	World	BKG	House number	€
Photon	Offline	In your institute	World	OSM	House number	Free
List of ZIPs	Offline	-	Depends on list	Shapefiles	ZIP region	Free

BKG – Bundesamt für Kartographie und Geodäsie (official maps of Germany); OSM – Open Street Maps

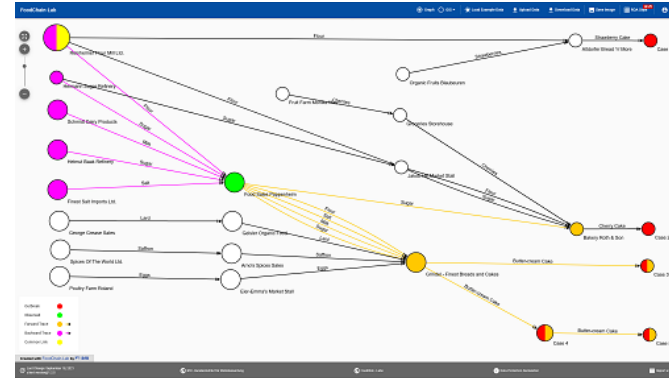
- Geocoding services often do not find all addresses. Then you can use a cascade of several geocoding services
- If you do not want to search for addresses online (due to GDPR reasons) it is possible to search for streets without house numbers. Or you search only for ZIP codes.
- If the whole geocoding service is downloadable you could also set up a server in your own institution so that your searches stay completely offline.

Histamine in tuna outbreak 2017

Overview: FoodChain-Lab Desktop and Web App



FCL-Desktop



FCL-Web App

- In KNIME (~ 1 GB installation)
- Data is stored locally
- Using KNIME needs to be learned

Features

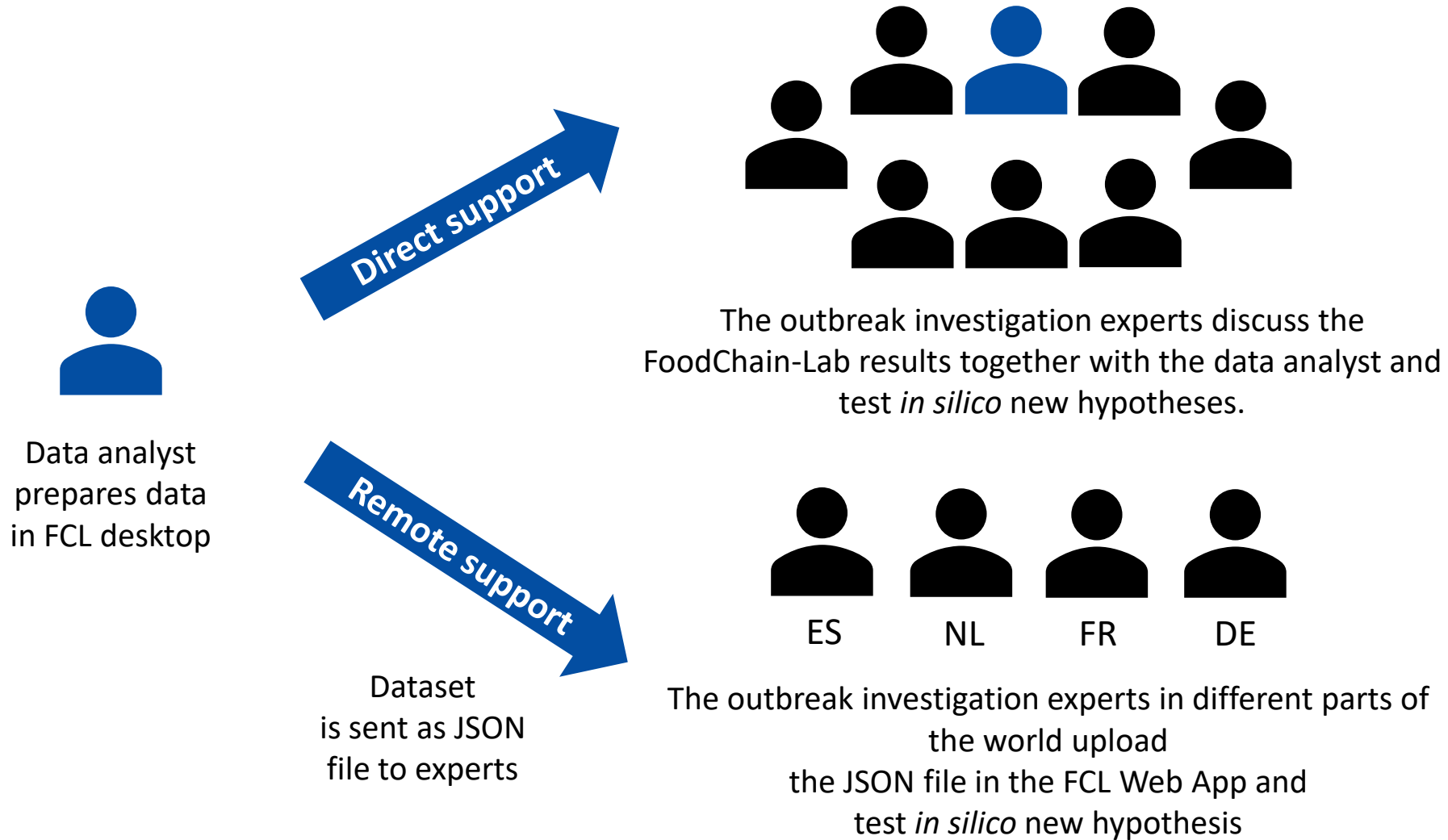
- Template import (Forward, backward, All-in-One)
- Tracing template generation
- Database with plausibility checks
- Geocoding
- Clustering
- KNIME Data analytics functionalities
- Graph view and GIS view
- Tracing
- Hypothesis generation
- -

- In a web browser (no installation)
- Data stays local, browser is only for visualisation
- Intuitive handling

Features

- - Import of the All-in-One Template
- -
- -
- -
- -
- -
- -
- Graph view and GIS view
- Tracing
- Hypothesis generation
- ROA style for reports

Overview: FoodChain-Lab Desktop and Web App



Alexander Falenski
T +49 30 18412-0
ansprechperson@bfr.bund.de

German Federal Institute for Risk Assessment
bfr.bund.de/en

CC-BY-ND 4.0

BfR | Identifying Risks –
Protecting Health

Consumer health protection to go
BfR2GO – the BfR Science Magazine

bfr.bund.de/en/science_magazine_bfr2go.html

Follow us

-  @bfrde | @bfren | @Bf3R_centre
-  @bfrde
-  youtube.com/@bfr_bund
-  social.bund.de/@bfr
-  linkedin.com/company/bundesinstitut-f-r-risikobewertung
-  soundcloud.com/risikobewertung